

PATRICK
SCHOOL
OF THE ARTS



2024

PUSH HARDER
REACH FURTHER
SOAR HIGHER



PERFORMING ARTS

WELCOME



Patrick School of the Arts (PSA) is one of the most recognised performing arts institutions in Australia.

Patrick School of the Arts's Full-time Performing Arts Course builds on the school's strong dance reputation and complements it with a focused and intense drama and vocal training.

Delivering on behalf of Swinburne University of Technology (RTO 3059) we offer nationally accredited VET courses embedded in our programs.

Our graduates are seen in major productions across Australia and abroad. They are recognised as being trained to a higher athletic and physical standard than what has been seen in this country for a long time.

Artistic Director, Todd Patrick, is renowned for his dedication and unwavering attention to detail across all aspects of his specifically designed courses.

All of the teachers in the course are carefully chosen and are currently working in many areas of the Performing Arts.

Their passion and willingness to get the next generation polished and ready for action is our commitment.

Acceptance into the course is by audition only.

All national accreditation for embedded VET courses will be subject to the Government's approval annually and confirmed in late November.

Our graduates
are seen in major
productions
across Australia
and abroad.



COURSE OUTLINE

Subjects covered in the curriculum include:

- Dancing: Ballet, Jazz, Tap, Musical Theatre, Contemporary and Hip Hop
- Drama
- Music Theory
- Group Vocal Classes
- Audition Workshop
- Dialect/Accent Coaching
- Script Workshop and Repertoire
- Acting technique

Additionally, the curriculum is supplemented and supported by pilates components that encourage core muscular strength and support for mobility, flexibility and injury prevention.

The course is directed towards those that need to improve on a certain area of the three triple threat skills; singing, dancing or acting. The course is geared towards those who want a career in Music Theatre.

Masterclasses are held throughout the year incorporating all aspects of the industry, with instruction from current industry professionals and international guests. Students perform throughout the year for producers, directors, choreographers and leading experts within the Entertainment Industry. Performances include mid year, vocal and end of year showcases.



Patrick School of the Arts is proud to work with Swinburne University of Technology to offer nationally accredited VET courses through our Performing Arts program. Performing Arts students will be required to complete all units listed below that will be delivered over a two year period by Patrick School of the Arts.

PERFORMING ARTS ACCREDITED COURSES

CUA20120 FIRST YEAR CERTIFICATE II IN DANCE		
BSBTWK201	ELECTIVE	Work effectively with others
CUADAN115	ELECTIVE	Develop foundational street dance techniques
CUADAN211	CORE	Develop basic dance techniques
CUADAN212	CORE	Incorporate artistic expression into basic dance performances
CUADAN213	ELECTIVE	Perform basic jazz dance techniques
CUADAN216	ELECTIVE	Perform basic ballet techniques
CUAIND211	CORE	Develop and apply creative arts industry knowledge
CUAPRF211	CORE	Prepare for live performances
CUAWHS111	CORE	Follow safe dance practices
CUAWHS211	CORE	Develop a basic level of physical fitness for dance performance

CUA30120 FIRST YEAR CERTIFICATE III IN DANCE		
CUACHR311	CORE	Develop basic dance composition skills
CUADAN315	ELECTIVE	Increase depth of jazz dance techniques
CUADAN316	ELECTIVE	Increase depth of ballet dance techniques
CUADAN318	ELECTIVE	Increase depth of contemporary dance techniques
CUADAN319	ELECTIVE	Increase depth of street dance techniques
CUADAN321	ELECTIVE	Increase depth of tap dance techniques
CUADAN331	CORE	Integrate rhythm into movement activities
CUAIND311	CORE	Work effectively in the creative arts industry
CUAPRF314	ELECTIVE	Develop audition techniques
CUAPRF316	ELECTIVE	Develop basic musical theatre techniques
CUAPRF317	CORE	Develop performance techniques
CUAWHS311	CORE	Condition body for dance performance



DELIVERY OF VET COURSES

CUA40120 SECOND YEAR CERTIFICATE IV IN DANCE		
CUAPRF412	ELECTIVE	Develop conceptual and expressive skills as a performer
CUAWHS411	CORE	Apply movement and behavioural principles to conditioning
CUADAN313	CORE	Develop and apply dance partnering techniques
CUADAN413	ELECTIVE	Develop expertise in jazz dance techniques
CUADAN415	ELECTIVE	Develop expertise in street dance techniques
CUADAN417	CORE	Develop expertise in dance performance techniques
CUADAN420	ELECTIVE	Develop expertise in tap dance techniques
CUAPPR414	ELECTIVE	Develop self as artist
CUAPRF414	CORE	Develop movement skills for performance
CUAPRF415	CORE	Rehearse for performances
CUAPRF417	ELECTIVE	Develop expertise in musical theatre techniques
CUACHR413	CORE	Develop choreography skills



DIPLOMA PROGRAMS

All of our diploma programs are delivered on behalf of Ausdance Victoria (RTO code 20947).

THIRD YEAR DIPLOMA OF DANCE (PERFORMING ARTS STREAM)

CUADAN517	Refine dance partnering techniques	C
CUADAN531	Refine dance techniques	C
CUAPPR512	Develop sustainability of own professional practice	C
CUAPRF511	Refine performance techniques	C
CUAPRF513	Prepare for and perform in competitive environments	C
CUAWHS413	Incorporate anatomy principles into skill development	C
CUAWHS511	Maintain a high level of fitness for performance	C
CUAIND412	Provide freelance services	Gp B
CUAPRF514	Refine musical theatre techniques	Imported
CUADAN512	Refine ballet performance skills	Gp A
CUADAN515	Refine contemporary dance techniques	Gp A
CUADAN518	Develop expertise in allied contemporary dance techniques	Gp A
CUADAN520	Refine street dance techniques	Gp A
CUAMPF615	Develop advanced vocal techniques	Imported
CUAMUP511	Apply theatrical make-up and hairstyles	Gp B
CUAWHS412	Participate in gym and resistance training for performances	Gp B
CUAACT411	Use acting techniques in performance	Gp B
CUAPRF420	Develop on-camera performance skills	Gp B

FEE STRUCTURE

Total	\$7,500
Prepay	-\$500
Remainder	\$7,000
There are no concessions for this year	

FEEDBACK

The faculty of teachers continually liaise with the Directors of Patrick School of the Arts to follow the individual progress of each student.

Students have a number of core teachers who develop technique and undertake regular assessments whilst industry professionals offer a variety of styles.





SUPPORT & WELFARE

As well as support from our Faculty, Patrick School of the Arts students also have access to Swinburne University of Technology's counselling services (located off-site at the Swinburne Campus in Hawthorn).

The Swinburne team is committed to assist you in any mental health concern you may have, so you can continue to thrive and achieve your academic goals.

They will support you if you are experiencing:

- Crisis – if you're acutely distressed and needing immediate support
- Relationship and/or family issues
- Academic and general stress
- Grief and loss
- Loneliness and isolation
- Depression, anxiety, and other mental health issues.

The team at Swinburne offer comprehensive services run by a dedicated team of mental health clinicians with a range of specialities, including international and Aboriginal communities, BIPOC, anxiety and depression, LGBTQIA+, sexual assault, domestic violence, Autism and ADHD.

Depending on your identified difficulties and needs, they can suggest strategies for dealing with your thoughts, feelings and emotions through individual counselling and group workshops.

**Please note that these services are located at Swinburne University (Hawthorn Campus) and not at the Patrick School of the Arts Studios in Prahran.*



UNIFORM

FEMALE

- Black high-waisted booty shorts (Jazz)
- Black high-waisted leggings (Jazz)
- Black crop top (Jazz)
- Black tank leotard (Jazz)
- Black fashion leotard (Jazz/Musical Theatre)
- Black open back leotard (Ballet)
- Black lace wrap ballet skirt (Optional)
- Ultra soft convertible pink or flesh-coloured tights (Ballet)
- Ultra soft convertible black tights (Ballet/Jazz)
- Black fishnet tights (Musical Theatre)
- Pink ballet shoes
- Black chorus shoes
- Black tap shoes
- Black jazz shoes (split sole from Bloch/Energetiks/Capezio)

MALE

- Black unitard (Ballet)
- Black ballet tights (Ballet)
- Black shorts (Jazz)
- Black singlet (Jazz)
- Support (from Bloch/Energetiks/Capezio)
- Black ballet shoes
- Black tap shoes
- Black jazz shoes (split sole from Bloch/Energetiks/Capezio)

Additional appropriate black rehearsal wear may be adorned during arts classes.

No offensive or outlandish clothing is to be worn.

FEE STRUCTURE

The total cost for the 2024* Patrick School of the Arts Musical Theatre program is a total of \$13,000. A non-refundable prepayment of \$1,000 is due 14 days from receiving your acceptance. The remaining \$12,000 will be paid throughout 2024.

**Fees are subject to change.*

Direct Debit Payment is available, and can be arranged to occur on a weekly, fortnightly or monthly.

Please contact Accounts for more information.

Email: accounts@patrickstudiosaustralia.com.au.

Concession rates are also available to eligible students.

Students may be eligible for Government funding under the skills first program, refer to the link below. For eligible students, the fee is comprised of two components, the PSA fee and the tuition fee for the embedded course/s through Swinburne University of Technology (SUT).

[www.swinburne.edu.au/current-students/ manage-course/fees/ loans-discounts/skills-first/](http://www.swinburne.edu.au/current-students/manage-course/fees/loans-discounts/skills-first/)

Concession rates are available to eligible students in Certificates II, III or IV for the Swinburne tuition fee component. Students who hold a Health Care Card are eligible for the concession rate, please refer to this link:

[www.swinburne.edu.au/current-students/ student-services-support/financial/concessions/](http://www.swinburne.edu.au/current-students/student-services-support/financial/concessions/)



FEE STRUCTURE

FIRST YEAR PERFORMING ARTS

First Year Performing Arts includes tuition fees for Certificate II in Dance CUA20113 and Certificate III in Dance CUA30113, the accredited courses provided in conjunction with Swinburne University of Technology.

WITHOUT CONCESSION

Components			
Total	\$13,000	PSA Fee	\$7,962
Prepay	-\$1,000	Swinburne Tuition Fee	\$4,038
Remainder	12,000		

WITH CONCESSION

Components			
Total	\$8,770	PSA Fee	\$7,962
Prepay	-\$1,000	Swinburne Tuition Fee	\$808
Remainder	\$7,770		

SECOND YEAR PERFORMING ARTS

Second Year Performing Arts includes tuition fees for Certificate IV in Dance CUA40113, the accredited course provided in conjunction with Swinburne University of Technology.

WITHOUT CONCESSION

Components			
Total	\$13,000	PSA Fee	\$8,736
Prepay	-\$1,000	Swinburne Tuition Fee	\$3,264
Remainder	\$12,000		

WITH CONCESSION

Components			
Total	\$9,389	PSA Fee	\$8,735
Prepay	-\$1,000	Swinburne Tuition Fee	\$654
Remainder	\$8,389		

SECOND/THIRD YEAR PERFORMING ARTS

Second/Third Year Performing Arts includes tuition fees for Diploma of Dance (Elite Performance) CUA50113, the accredited course provided in conjunction with Swinburne University of Technology.

WITHOUT CONCESSION

Components			
Total	\$13,000	PSA Fee	\$5,594
Prepay	-\$1,000	Swinburne Tuition Fee	\$6,406
Remainder	\$12,000		

There is concession at Cert IV level but not at Diploma.

*Please note these costs are based on 2023 fees and may be subject to change. The Patrick School of the Arts fee covers costs such as: dance class hours not mapped to accredited courses, specialist visiting artists, industry panels, performance costs such as costumes, venues, sets/lights/audio, operational staff, out-of-hours rehearsals, promotions, show costs, maintenance and campus services costs. A breakdown of this fee will be provided prior to enrolment.



ATTENDANCE

100% attendance is expected from all students at all scheduled classes, performances and special events throughout their time at Patrick School of the Arts. Failure to uphold a 95% attendance rate during their time here will result in a review of the student's enrolment within Patrick School of the Arts.

This is to uphold a professional standard and also to meet the attendance criteria of Swinburne University of Technology.

For safety and PSA protocol, all students are expected to sign in at reception every day upon arrival and exit. If for any reason students are anticipating their absence, arriving late to school, or if a student needs to leave school early, the student must contact their coordinator as soon as possible.

Phone: (03) 9521 1735

Email: jan@patrickstudiosaustralia.com.au
or info@patrickstudiosaustralia.com.au

Patrick School of the Arts accepts students on the basis that they are in good health and fitness. Should anything prevent students from engaging in physical training, they must notify Reception or their coordinator immediately to avoid any further risk to their health. In the event of an injury occurring in class, students must report immediately to the front desk in order for the appropriate medical aid/support to be administered by the staff. First Aid kits are available at reception for any minor injuries.

Please note: Panadol or any other form of pharmaceutical medications cannot be given to any student.



TERM DATES

PERIOD	START	FINISH
ORIENTATION DAY	January 29, 2024	
TERM 1	January 30, 2024	March 28, 2024
TERM 2	April 15, 2024	June 22, 2024
TERM 3	July 15, 2024	September 20, 2024
TERM 4	October 7, 2024	December 7, 2024

These dates are indicative only and are not finalised.



2020 TERTIARY PERFORMING ARTS: TERM 1 WEEK 1

SAMPLE TIMETABLE

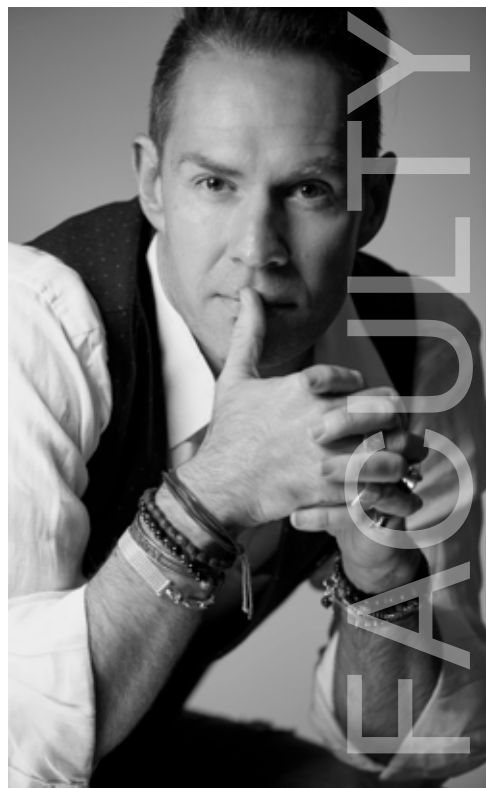
[illegible]

TODD PATRICK FOUNDER & STUDIO DIRECTOR

Todd Patrick is the visionary Founder of Australia's most successful performing arts institution, the Patrick School of the Arts. Under his expert guidance, countless Alumni have graced stages around the world. 17 years ago, Todd established Patrick Studios Australia, which has since evolved into the Patrick School of the Arts. This full-time institution offers comprehensive Tertiary courses such as Performing Arts, Musical Theatre and Dance, as well as the Patrick Arts High School and Professional Development program, which are specifically designed to cultivate dancers for a career in the arts. With each passing year, Patrick School of the Arts continues to push boundaries and open doors for aspiring artists. Todd's commitment to the industry does not end there, as he also founded Patrick Management to help students and professionals achieve their dreams.

Todd's impressive career spans the globe, from his beginnings with the renowned Walt Disney Studios, to his time with the prestigious Lido in Paris, France, and the Royal Palace Strasbourg, W Hotel South Korea, and Jupiter's Casino in the Gold Coast, Australia. He has also worked as a dancer, choreographer, and creative director for industry giants such as Crown Melbourne, Star City, Vanessa Amorosi, Ricki-Lee Coulter, Zoe Badwi, Kate Ceberano, Dannii Minogue, MAC Cosmetics, Christian Dior, Versace, Issey Miyake, Chanel, and Gucci, alongside Giselle Bundchen, John Galliano, and Karl Lagerfeld.

Todd's students and talent have followed in his illustrious footsteps, appearing in world-famous shows like Moulin Rouge, Wicked, Hamilton, Frozen, Mary Poppins, Harry Potter and the Cursed Child, and Beauty and the Beast, as well as renowned venues across Europe, including The Lido, Moulin Rouge, and La Nouvelle Eve. His students have also appeared in music videos, TV programs, cruise ships, commercial functions, and fashion parades, collaborating with highly acclaimed directors and choreographers. Todd Patrick's impact on the industry is unparalleled, and his dedication to fostering the next generation of artists continues to shape the world of performing arts today.



TEACHING

NATHAN PINNELL

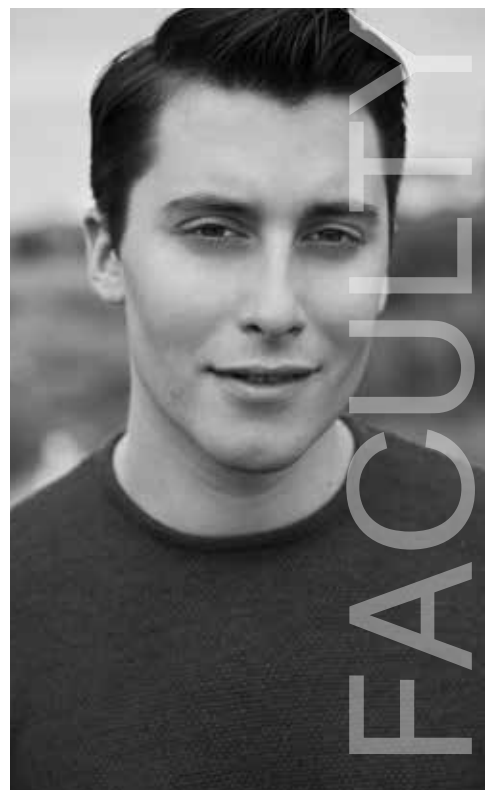
TERTIARY COORDINATOR

Nathan is an award-winning performer with a career spanning over two decades. His professional career began at the age of 9 in two Opera Australia productions, Falstaff and Manon Lescaut. As a young boy he also appeared in numerous television commercials such as Sea Monkey's, Australia Post and Meadow Lea. Nathan has been involved in Melbourne Fashion Week, re-opened Hamer Hall Arts Centre, performed for the Prime Minister at Australia House in London and took part in launching for Mercedes Benz.

His theatre credits include Singin' In The Rain (Dance Captain/Swing/Cover: Production Tenor and Dialect Coach), Hugh Jackman: Broadway To Oz (Dance Captain/Featured Ensemble), Anything Goes (Dance Captain/Swing/Cover: Billy Crocker), Baz Luhrmann's Strictly Ballroom: The Musical as Liam Lamb (Understudied and performed Ken Railings, Nathan Starkey and Clarry Welch), Legally Blonde as Carlos (Savoy, West End), West Side Story as Baby John, Chicago: The Musical for which he received a Green Room Award (Cover: Mary Sunshine), Dusty: The Original Pop Diva as Young Tom, We Will Rock You (Ensemble and Swing), Chitty Chitty Bang Bang, High School Musical (Cover: Jack Scott/Ryan Evans), Eurobeat: Almost Eurovision and Rhythm and Runners (Melbourne Fringe Festival). For the Production Company: Gypsy (Tulsa), receiving Best Supporting Actor for the Theatre People Pro Choice Awards, Boy From Oz (Chris Bell), Promises Promises, 42nd Street, Sweet Charity and The Music Man.

Television credits include: It Takes Two, Blue Heelers, So You Think You Can Dance, The Footy Show, Australia's Most Wanted, Wicked Science, The Morning Show, Morning's with Kerrie Anne and Sunrise. Nathan was also Assistant Choreographer for Caroline O'Connor and Strictly Sydney Mardi Gras Finale Float 2014.

Nathan has been teaching and choreographing for various universities, full time courses and dance studios for the last two decades. He is renowned for his progressive work as a passionate performer, teacher and artist within the industry and continues to create and work with the worlds finest.



TEACHING

JAN DI PIETRO ASSISTANT TERTIARY COORDINATOR

Jan has been a working professional across theatre, film, TV, and commercials since the age of 13. His recent theatre work as a performing artist was in *A Christmas Carol* (GWB), and *Muriel's Wedding The Musical* (Global Creatures).

On the screen, Jan can be seen in the latest season of ABC's *Utopia*. He has appeared in numerous TVCs, Musicals, Plays, and Operas across the years.

As a creative, Jan has been a Director and Choreographer for education, private institutions, corporate, and commercial. He has devised new works for large scale cultural and sporting events including the AFL and the Australian Open.

Jan is a produced playwright; his debut play *Repentance Creek* was presented by leading independent theatre company Q44 Theatre in 2021. As a producer and coordinator, Jan has worked in film production, theatre, art, and events. He was particularly excited and challenged by his work that helped produce the Australian premier of the immersive theatre event *ALONE*.

Jan's early training was done at the Victorian College of the Arts Secondary School. After graduating high school, Jan took a place at the American Academy of Dramatic Arts (AADA) in New York City where he undertook practice-based theatre training under the late Jackie Bartone. In his graduating year, Jan was honoured with the Charles Jehlenger Award for excellence in Acting. He also gained a place in the highly competitive third-year Academy Company of Actors where he worked under seasoned Broadway veteran and Director/Writer Jonathan Bolt.

Jan holds a Bachelor Communication from Griffith University, 1st Class Honours. He is now a PhD Candidate (Performing Arts).



TEACHING

NATALIE GAMSU

VOCALS

Natalie Gamsu is a singer, actor and cabaret artist whose performances have been acclaimed in New York, Chicago, Los Angeles, London, Berlin, Amsterdam, Sydney and Johannesburg.

Born in Namibia, Natalie studied Drama at the University of Cape Town, South Africa. In South Africa, she established a strong following with her own solo cabaret shows, musical theatre, and the television series, The Big Time, (Best Actress in a TV series).

Some of Gamsu's theatre credits include Candide (Woman With One Buttock – Multiple Award Winner), Dr Zhivago (GFO), Mary Poppins, (Miss Andrew - Disney), Women Of Troy (directed by Barry Kosky, Sydney Theatre Company), Baz Luhrmann's Strictly Ballroom (Abuela) (Global Creatures) and Ladies In Black directed by Simon Phillips (Magda). She recently made her Hayes Debut in Darlinghurst Nights (Rose), directed by Lee Lewis, composed by Max Lambert.

From 1992 until 2003, Natalie lived and worked in New York City, performing at the famous Oak Room, Fez and The Russian Tea Room. She won the Backstage Bistro Award for Outstanding Vocalist and a MAC Award for Outstanding Female Vocalist in 1997 and 2000. Her debut CD Weave also received a MAC nomination for Best New Recording.

Since moving to Australia in 2003, Natalie has performed in clubs in Sydney, Melbourne, and Perth as well as at the Adelaide Cabaret Festival. She continues to create her own one-woman shows, and produced her second CD, Misfit.

Natalie also works on the large and small screens. Her most recent credits include the on-going role of Jan Barton in the long running Australian soap Neighbours, and the role of Fatima in the Feature Film, Ali's Wedding, (produced by Matchbox Films).

Her new one-woman show Carmen – Live Or Dead, will premiere at The Hayes in Sydney in April 2018 followed by performances at The Adelaide Cabaret Festival in June.



TEACHING FACULTY



ACCOMMODATION

Patrick School of the Arts does not have its own on-campus student accommodation, however there are several housing and accommodation options available.

Students can choose to:

- Rent an apartment, unit or house
- Share an apartment, unit or house
- Reside in student apartment complexes or hostels
- Live with a family in a home stay or boarding arrangement

Please note that January/February is a busy time with many students all looking for accommodation and that prices and facilities vary. The following list includes some of the residences available in Melbourne of which PSA does not endorse any particular accommodation services, so please make sure you investigate the residences directly for more information and to find accommodation that suits your particular needs.

RENT AN APARTMENT/UNIT/HOUSE

(costs are an indication only)

Renting your own apartment or house through a Real Estate Agent or a private landlord offers students privacy and independence. Most rental properties are unfurnished so initial setting up costs can include rent, food, telephone calls, gas and/or electricity for 12 months. (You may also need to buy furniture and other household goods). A bond will usually need to be paid before you move in.

Weekly rent:

- Flat/Apartment: one bedroom – A\$200 – A\$350
- Flat/Apartment: two bedroom – A\$170 – A\$350 per person
- House: allow A\$120 – A\$250 per person

When you share a flat, apartment or house everyone shares the kitchen, bathroom, laundry and living rooms. You have your own bedroom.

SHARE AN APARTMENT/UNIT/HOUSE

Moving into an established household that has a vacant bedroom is often an easier and less costly option than leasing a vacant house or flat. You will pay rent for your own bedroom and share the bathroom, kitchen and living areas with other people living in the household.

Please notify Patrick School of the Arts if you are looking to share accommodation and we will attempt to connect with other PSA students wishing to share accommodation.

www.flatmates.com.au

www.flatmatefinders.com.au



ACCOMMODATION

STUDENT APARTMENT OR PRIVATE HOSTEL

(costs are an indication only):

Melbourne Connection Traveller's Hostel

Ph: +61 3 9642 4464 e: info@melbourneconnection.com www.melbourneconnection.com

The Friendly Backpacker Ph: +61 3 9670 1111 or 1800 249 207 e: renouf@friendlygroup.com.au
www.friendlygroup.com.au

Arrow on Swanston e: accommodation@arrowonswanston.com.au Ph: +61 3 9225 9000
www.arrowonswanston.com.au

Merlin Apartments e: jyew@merlinproperties.com.au Ph: + 61 3 9670 7788
www.merlinproperties.com.au

Uni Lodge on Flinders e: unilodge.flinders@unilodge.com.au Ph: +61 3 9224 1500
www.unilodge.com.au

Uni Lodge on Swanston e: unilodge.swanston@unilodge.com.au Ph: +61 3 9224 7888

UCA Melbourne – University City Apartments e: info@unicityapartments.com.au
www.unicityapartments.com.au

Carlton College Hostels e: admin@carltoncollege.com.au Ph: + 61 3 9347 3238
 Fax: +61 3 9842 3813 www.carltonmelbournecollege.com.au

Bouverie Residence e: admin@rooms.net.au Ph: + 61 3 9347 8000 www.rooms.net.au

Dalkeith Hostel e: dalkeithhouse@hotmail.com Ph: 0409 016 521

Elgin Lodge e: elginlodge@dodo.com.au Ph: + 61 3 9859 4862 www.rentfast.com.au

Georges Terrace e: georgeterrace@hotmail.com Ph: + 61 3 9354 9991

Grattan House e: grattanhouse@optusnet.com.au Ph: + 61 3 9404

Monet Residence e: admin@rooms.net.au www.rooms.net.au

YWCA Flats e: rhouse@ywca.net w: Ph: + 61 3 9429 4374 www.ywca.net



ACCOMMODATION

LIVE WITH A FAMILY (HOMESTAY)

(costs are an indication only)

If this is your first experience of living away from home you may find the transition to tertiary life much easier if you don't have to adjust to independent living at first. Homestay or full board accommodation is usually provided in a suburban household with your own fully furnished room, 2-3 meals per day and all household bills except telephone calls are included in the overall cost of approximately A\$180 A\$190 per week. A private Homestay Consultant can arrange a place for you. The placement fee is usually \$100.

Below is a list of some private Homestay consultants:

- **Australian Student Accommodation Placements (ASAP)** Contact: David Wood
e: davidw@studenthomestay.com.au Ph: +61 3 9812 0761 **www.studenthomestay.com.au**
- **Familystay Australia** Contact: Margaret Vella e: familystay@bigpond.com
Ph: +61 3 9574 7476
- **Homestay Victoria** Contact: Stefan Morgan e: sandra@homestay-australia.com
Ph: +61 3 9642 1566 M: 0412 036 579 **www.homestay-australia.com**
- Student Accommodation Services e: sacomm@studentaccommodation.com.au
Ph: + 61 3 9495 0007 **www.studentaccommodation.com.au**

Disclaimer: Patrick School of the Arts takes no responsibility for the accuracy of the above information. The accommodation facilities referred to on this site are not owned or operated by Patrick School of the Arts, nor do they have any affiliation with Patrick School of the Arts. Patrick School of the Arts does not endorse the use of any of the accommodation options listed we are simply providing public available information. Patrick School of the Arts takes no responsibility for accommodation or the services provided by these organisations. Patrick School of the Arts welcomes students from around the country and offers advice and assistance on re housing, finding work and general advise in order to become home established in a new state.



TRANSPORTATION

TRAMS

Tram number: 6 Glen Iris runs from Swanston St in the city to High Street, and along High Street, terminating at Malvern Road, Glen Iris.

Tram number: 78 North Richmond to Prahran travels along Chapel Street and stops on the corner of High Street.

TRAIN

Sandringham Line: The campus is a few minutes walk from Prahran or Windsor stations

Visit Public Transport Victoria (PTV) and find the quickest way to get to your Melbourne Polytechnic campus.

Furthermore, download the brilliant **Citymapper app** to assist you with your public transport options to PSA.





CAMPUS

Patrick School of the Arts is based in Prahran, at the Melbourne Polytechnic campus. The facilities are based on the Australian Institute of Sport's dynamic training facilities catering for all aspects of a performer's needs, including:

- An in-house gym and pilates studio
- Fully air conditioned and heated studios
- Extensive wardrobe departments
- Access to all the facilities that Melbourne Polytechnic has to offer.





AUDITIONS

Entry to Patrick School of the Arts is strictly by audition only. Students are selected on the basis of talent and their future potential to benefit from the training provided.

During their audition, each candidate will audition alongside a large volume of other auditionees in an audition with a singing, acting and dancing component.

Auditions are held
twice a year, in July
and in November.





ALUMNI

Our Alumni have performed in shows all over the world.



Adam Noviello

Priscilla, Queen of the Desert; Matilda; Tommy; Charlie and the Chocolate Factory; Chess



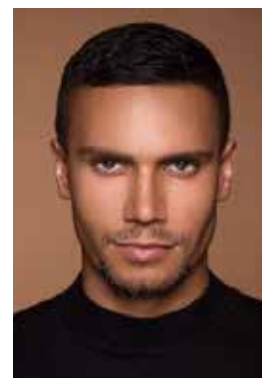
Alex Given

South Pacific; Georgy Girl; Holding the Man; Book of Mormon, Singin' In The Rain (UK)



Elandra Eramiha

Kiss of the Spider Woman; Aladdin; Bring it On; Memphis; Hamilton (AUS)



Euan Fistrovic-Doidge

Marius - Les Miserables; Priscilla, Queen of the Desert - Felicia; Joseph; Cruel Intentions



Julian Ardley

The King & I; Dance Captain - Lido



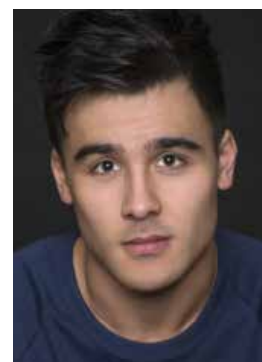
Karli Dinardo

Dance Captain - Hamilton US; Flashdance US; Moulin Rouge - Broadway; Dancin' (Original Broadway Cast)



Melanie Hawkins

Strictly Ballroom; Wicked; King Kong; Saturday Night Fever - Annette



Nick Len

MD for Barry Humphries West End Tour; Thoroughly Modern Millie UK; Wicked UK



Nick Phillips

Ellen DeGeneres Show; DWTS USA; Magic Mike



Samantha Dodemaide

Dorothy - The Wizard of Oz; Charity - Sweet Charity; Chicago; Singing in the Rain; Anything Goes; Evita; Moulin Rouge



Sophia Laryea

The Lion King; Vogue



Taylor Scanlan

Cats Asia Tour; Lord of the Flies; Charlie and the Chocolate Factory; Mary Poppins



PATRICK MANAGEMENT



PATRICK MANAGEMENT

Patrick Management is dedicated to managing and developing the careers of performing artists. We are passionate about nurturing and developing new talent, whilst taking pride in driving their careers forward. Achieving goals in an atmosphere of trust and respect is our primary objective. We represent artists with whom we feel a particular personal and artistic affinity. We believe this is the best way to support the industry and our clients with the greatest conviction and integrity.

We are proud to present both emerging artists, as well as the more experienced, whom are enjoying exciting careers both here and abroad.

Our agent, Steven Grace, has worked in the industry from a young age. After having a very successful career in film, television and theatre, he comes with a wealth of industry knowledge to impart onto all our clients. Having previously owned a production company with an agency, he is familiar with all aspects of the entertainment industry. He has worked and collaborated several times with Baz Luhrmann and multiple Oscar winner Catherine Martin as well as Vogue USA and Australia.

To discuss representation with Patrick Management, please contact

Steven Grace on 03 9521 1735.

Email: info@patrickmanagement.com.au



STEVEN GRACE AGENCY DIRECTOR AT PATRICK MANAGEMENT

Steven was an an award-winning performer with a career spanning 30 years internationally across Film, TV and Musical Theatre. Over the past 5 years, Steven has had exceptional success mentoring and managing clients who are currently appearing in Vogue Magazine, Hamilton, Disney's 'Beauty and the Beast', Disney's 'Frozen', Hairspray, Joseph and The Amazing Technicolour Dreamcoat, Cats, Mary Poppins, Legally Blonde, An American in Paris, The Wedding Singer, The Who's 'Tommy', West-Side Story, Harry Potter and the Cursed Child, Robbie Williams' Biopic Film 'Better Man' - just to name a few. Steven's recent work includes choreographer for The Spooky Files for ABC and approved photographer for SBS and Moulin Rouge: The Musical. He has negotiated cruise ship contracts for clients on Royal Caribbean, Norwegian Cruise Line, Seven Seas Cruises, Princess Cruises, RWS, Oceania Cruises. He is also production coordinator for the Melbourne Follies.

At age 10 he won the role of Luke in Strictly Ballroom. The film was a success and won 17 awards and 11 nominations worldwide including a Golden Globe® nomination for Best Picture. This began his long association with Baz Luhrmann and Oscar® winner Catherine Martin, with them he has been involved in many projects including the Opening Extravaganza of Fox Studios Australia, their production of A Midsummer Night's Dream and he played the role of lead tango dancer in the Oscar® nominated film Moulin Rouge, again for Best Picture. This established him as an Elite talent and working with the best from a young age.

Theatre includes Chicago on the West End, London, performing alongside Brooke Shields, Ashlee Simpson and original Wonder Woman Lynda Carter. He has also performed Chicago in Cyprus and in Australasia playing Fred Casely. Steven to date has played every male character in the show and has understudied and played the roles of Billy Flynn and Amos Hart as well as Dance Captain. Steven won a Green Room Award for Chicago in Australia. Other shows include Priscilla Queen Of The Desert, West End as Assistant Dance Captain. Australian Theatre includes Promises, Promises (The Production Company), The Boy From Oz- Role- Trick (TPC), Dein Perry's Steel City Australian and U.S Tour including Radio City Music Hall in New York, which made a history making season as the first Australian tap group ever to perform there. Fame and We Will Rock You as one of the Original Australian Cast hand picked by Queen themselves. Steven was involved in the original workshops for the musical King Kong, was Dance Captain in The Sound of Music for the 2009/2010 Australian tour and worked on the creative team as assistant to the choreographer and Dance Captain on Strictly Ballroom the Musical.



PATRICK SCHOOL OF THE ARTS



Level 2, 140 High Street Prahran VIC 3181
P (03) 9521 1735 | info@patrickstudiosaustralia.com.au

www.psarts.com.au

