

PATRICK  
SCHOOL  
OF THE ARTS



2026

PUSH HARDER  
REACH FURTHER  
SOAR HIGHER



DANCE



# WELCOME



**Patrick School of the Arts (PSA) is now one of the most recognised performing arts institutions in Australia.**

We offer a Full Time Dance Program, catering to dancers seeking an exceptional career in the industry. These are highly practical courses based on the industry's needs, making them physically and mentally demanding, with entrance being highly competitive.

We are still in the process of finalising our RTO for our 2026 courses:

CUA20120 – Certificate II in Dance

CUA30120 Certificate III in Dance

CUA40120 Certificate IV in Dance

Delivering on behalf of Ausdance: RTO 20949

CUA51520 - Diploma of Professional Dance (Elite Performance)

**Acceptance into the course is by audition only.**

The program is designed to train and develop dancers in the areas of strength, flexibility, technique and creative expression. We seek to instill in students a passion, love and drive for the performing arts in order to establish long and successful careers in the entertainment industry.

Our graduates are seen in major productions across Australia and abroad. They are recognised as being trained to a higher athletic and physical standard than what has been seen in this country for a long time.

Artistic Director, Todd Patrick, is renowned for his dedication and unwavering attention to detail across all aspects of his specifically designed courses.

All of the teachers in the course are carefully chosen and are currently working in many areas of the Performing Arts.

Their passion and willingness to get the next generation polished and ready for action is our commitment.

All national accreditation for embedded VET courses will be subject to the Government's approval annually and confirmed in late November.

This program is designed to train and develop dancers in areas of strength, flexibility, technique and creative expression.



# COURSE OUTLINE

**The course runs on Mondays to Friday from 8:00am to 4:30pm.**

Subjects covered in the course include classical ballet, jazz, tap, musical theatre, contemporary, hip hop, acrobatics and vocal training. Additional private singing lessons are also available, at an additional cost.

The curriculum is also supported by yoga, pilates, gym and water-based cardio to encourage core muscular strength and support for mobility, flexibility and injury prevention.

Master classes are held throughout the year incorporating all aspects of the industry, with instruction from current industry professionals and international guests. Students perform throughout the year for producers, directors, choreographers and leading experts within the entertainment industry.

Performances include VDF Dance Festival, Mid-Year showcase and End of Year showcase.



Patrick School of the Arts is currently working on our 2026 RTO provider. Further information will become available before our Melbourne auditions in July.

Our program offers a comprehensive range of courses, including CUA20120 Certificate II in Dance, CUA30120 Certificate III in Dance, CUA40120 Certificate IV in Dance, and CUA40520 Certificate IV in Musical Theatre.

## DANCE ACCREDITED COURSES

CUA20120		FIRST YEAR CERTIFICATE II IN DANCE
BSBTWK201	<b>ELECTIVE</b>	Work effectively with others
CUADAN115	<b>ELECTIVE</b>	Develop foundational street dance techniques
CUADAN211	<b>CORE</b>	Develop basic dance techniques
CUADAN212	<b>CORE</b>	Incorporate artistic expression into basic dance performances
CUADAN213	<b>ELECTIVE</b>	Perform basic jazz dance techniques
CUADAN216	<b>ELECTIVE</b>	Perform basic ballet techniques
CUAIND211	<b>CORE</b>	Develop and apply creative arts industry knowledge
CUAPRF211	<b>CORE</b>	Prepare for live performances
CUAWHS111	<b>CORE</b>	Follow safe dance practices
CUAWHS211	<b>CORE</b>	Develop a basic level of physical fitness for dance performance

CUA30120		FIRST YEAR CERTIFICATE III IN DANCE
CUACHR311	<b>CORE</b>	Develop basic dance composition skills
CUADAN315	<b>ELECTIVE</b>	Increase depth of jazz dance techniques
CUADAN316	<b>ELECTIVE</b>	Increase depth of ballet dance techniques
CUADAN318	<b>ELECTIVE</b>	Increase depth of contemporary dance techniques
CUADAN319	<b>ELECTIVE</b>	Increase depth of street dance techniques
CUADAN321	<b>ELECTIVE</b>	Increase depth of tap dance techniques
CUADAN331	<b>CORE</b>	Integrate rhythm into movement activities
CUAIND311	<b>CORE</b>	Work effectively in the creative arts industry
CUAMWB401	<b>ELECTIVE</b>	Develop & implement own self-care plan in the creative industries
CUAPRF314	<b>ELECTIVE</b>	Develop audition techniques
CUAPRF316	<b>ELECTIVE</b>	Develop basic musical theatre techniques
CUAPRF317	<b>CORE</b>	Develop performance techniques
CUAWHS311	<b>CORE</b>	Condition body for dance performance



# DELIVERY OF VET COURSES

Patrick School of the Arts is currently working on our 2026 RTO provider. Further information will become available before our Melbourne auditions in July.

CUA40120	SECOND YEAR CERTIFICATE IV IN DANCE	
CUAPRF412	<b>ELECTIVE</b>	Develop conceptual and expressive skills as a performer
CUAWHS411	<b>CORE</b>	Apply movement and behavioural principles to conditioning
CUADAN313	<b>CORE</b>	Develop and apply dance partnering techniques
CUAPRF314	<b>ELECTIVE</b>	Develop audition techniques
CUADAN413	<b>ELECTIVE</b>	Develop expertise in jazz dance techniques
CUADAN415	<b>ELECTIVE</b>	Develop expertise in street dance techniques
CUADAN417	<b>CORE</b>	Develop expertise in dance performance techniques
CUADAN420	<b>ELECTIVE</b>	Develop expertise in tap dance techniques
CUAPPR414	<b>ELECTIVE</b>	Develop self as artist
CUAPRF414	<b>CORE</b>	Develop movement skills for performance
CUAPRF415	<b>CORE</b>	Rehearse for performances
CUAPRF417	<b>ELECTIVE</b>	Develop expertise in musical theatre techniques
CUACHR413	<b>CORE</b>	Develop choreography skills



# DIPLOMA PROGRAMS

All of our diploma programs are delivered on behalf of Ausdance Victoria (RTO code 20947).

## THIRD YEAR DIPLOMA OF DANCE (DANCE STREAM)

CUADAN517	Refine dance partnering techniques	C
CUADAN531	Refine dance techniques	C
CUAPPR512	Develop sustainability of own professional practice	C
CUAPRF511	Refine performance techniques	C
CUAPRF513	Prepare for and perform in competitive environments	C
CUAWHS413	Incorporate anatomy principles into skill development	C
CUAWHS511	Maintain a high level of fitness for performance	C
CUAIND412	Provide freelance services	Gp B
CUADAN512	Refine ballet performance skills	Gp A
CUADAN515	Refine contemporary dance techniques	Gp A
CUADAN518	Develop expertise in allied contemporary dance techniques	Gp A
CUADAN520	Refine street dance techniques	Gp A
CUACHR511	Create and perform complex dance pieces	Gp B
CUAMUP511	Apply theatrical make-up and hairstyles	Gp B
CUAWHS412	Participate in gym and resistance training for performances	Gp B
CUAACT411	Use acting techniques in performance	Gp B
CUAPRF420	Develop on-camera performance skills	Gp B

We are currently working on our 2026 Fee Structure. This information will be available prior to the July auditions.



# FEEDBACK

The teaching faculty continually liaise with the Directors of Patrick School of the Arts to follow the individual progress of each student.

Students have a number of core teachers who develop their technique and undertake regular assessments.





# UNIFORM

## FEMALE

- Black high-waisted booty shorts (Jazz)
- Black high-waisted leggings (Jazz)
- Black crop top (Jazz)
- Black tank leotard (Jazz)
- Black fashion leotard (Jazz/Musical Theatre)
- Black open back leotard (Ballet)
- Black lace wrap ballet skirt (Optional)
- Ultra soft convertible pink or flesh-coloured tights (Ballet)
- Ultra soft convertible black tights (Ballet/Jazz)
- Black fishnet tights (Musical Theatre)
- Pink ballet shoes
- Elizabeth 3" Soft Sole Character Heel in Beige
- Black tap shoes
- Black jazz shoes (split sole from Bloch/Energetiks/Capezio)
- Black Laduca dance boots - LAURA 3" BOOT SOFT SOLE

## MALE

- Black unitard (Ballet)
- Black ballet tights (Ballet)
- Black shorts (Jazz)
- Black singlet (Jazz)
- Support (from Bloch/Energetiks/Capezio)
- Black ballet shoes
- Black tap shoes
- Black jazz shoes (split sole from Bloch/Energetiks/Capezio)

Additional appropriate black rehearsal wear may be adorned during arts classes.

No offensive or outlandish clothing is to be worn.

Other uniform shoes etc. may be required as directed for specific performances.





# FEE STRUCTURE

**We are currently working on our 2026 Fee Structure and RTO provider. This information will be available prior to the July auditions.**

Direct Debit Payment is available, and can be arranged to occur on a weekly, fortnightly or monthly.

Please contact Accounts for more information.

Email: [accounts@patrickstudiosaustralia.com.au](mailto:accounts@patrickstudiosaustralia.com.au)



# ATTENDANCE

**100% attendance is expected from all students at all scheduled classes, performances and special events throughout their time at Patrick School of the Arts in order to uphold a professional standard. Failure to uphold a 95% attendance rate during their time here will result in a review of the student's position at Patrick School of the Arts and will affect the student's enrolment.**

For safety and PSA protocol, all students are expected to sign in at reception every day upon arrival and exit. If for any reason students are anticipating their absence, arriving late to school, or if a student needs to leave school early, the student must contact their coordinator as soon as possible.

If a student is anticipating either a late arrival, an early leave, or a full absence, they must notify staff in advance. Staff must also be notified of any last minute absences, late arrivals, or early departures. To notify staff students must email the following address, and not the staff directly: [attendance@patrickstudiosaustralia.com.au](mailto:attendance@patrickstudiosaustralia.com.au).

Patrick School of the Arts accepts students on the basis that they are in good health and fitness. Should anything prevent students from engaging in physical training, they must notify Reception or their liaisons immediately to avoid any further risk to their health. In the event of an injury occurring in class, students must report immediately to the front desk in order for the appropriate medical aid/support to be administered by the staff. First Aid kits are available at reception for any minor injuries.





# TERM DATES

PERIOD	START	FINISH
ORIENTATION DAY	January 27, 2026	
TERM 1	January 27, 2026	April 2, 2026
TERM 2	April 20, 2026	June 26, 2026
TERM 3	July 13, 2026	September 18, 2026
TERM 4	October 5, 2026	December 18, 2026

*These dates are indicative only and are not finalised.*





# TODD PATRICK FOUNDER & STUDIO DIRECTOR

**Patrick School of the Arts (PSA) is now one of the most recognised performing arts institutions in Australia.**

Todd Patrick is a renowned choreographer and artistic director based in Melbourne, Australia. Todd's long-spanned career has seen him travel all over the world working for some of the most industry-respected companies as both a dancer, choreographer and creative director.

He began his career with the internationally acclaimed company, Walt Disney Studios before beginning an impressive stint across Europe and Asia with the prestigious Lido in Paris, France, Royal Palace Strasbourg, W hotel South Korea and Jupiter's Casino in the Gold Coast, Australia.

The credits that Todd has to his name as a choreographer and dancer are nothing short of impressive, having worked with the likes of Crown Melbourne and Star City, Australian pop acts Vanessa Amorosi, Ricki-Lee Coulter, Zoe Badwi, Kate Ceberano and Dannii Minogue not to mention MAC Cosmetics, Christian Dior, Versace, Issey Miyake, Chanel and Gucci alongside Giselle Bundchen, John Galliano and Karl Lagerfeld.

In the corporate world, Todd has choreographed events for some of Australia's biggest companies: KPMG, Chadstone the Fashion Capital, NAB, Victoria Racing and Price Waterhouse Coopers.

Todd founded Patrick Studios Australia, now Patrick School of the Arts, which altogether encompasses a Full-time Performing Arts, Musical Theatre and Professional Development Course as well as Patrick Arts High - High School for the Performing Arts to specifically train dancers for a professional career in the arts. In addition, he started Patrick Management to help students and professional performers break into the industry and foster their career.

His students and talent are now following in his footsteps and can be seen around the world in shows like Wicked, Shout, Chicago, 42nd Street, Hamilton, West Side Story, Beauty and the Beast, Moulin Rouge, Burlesque, Guys & Dolls to name a few, and in venues across Europe including The Lido, Moulin Rouge, Royal Palace and La Nouvelle Eve. His students frequent in music videos, TV programs, cruise ships, commercial functions and fashion parades with highly acclaimed directors and choreographers.



# TEACHING



# TERTIARY CO-ORDINATORS



**DAVID WISKEN**  
MUSICAL THEATRE  
[david@patrickstudiosaustralia.com.au](mailto:david@patrickstudiosaustralia.com.au)



**ANNA BURGESS**  
PERFORMING ARTS  
[anna@patrickstudiosaustralia.com.au](mailto:anna@patrickstudiosaustralia.com.au)



**JAN DI PIETRO**  
MUSICAL THEATRE  
[jan@patrickstudiosaustralia.com.au](mailto:jan@patrickstudiosaustralia.com.au)



**MERRYN TIERNEY**  
DANCE  
[education@patrickstudiosaustralia.com.au](mailto:education@patrickstudiosaustralia.com.au)



# ACCOMMODATION

Patrick School of the Arts does not have its own on-campus student accommodation, however there are several housing and accommodation options available.

Students can choose to:

- Rent an apartment, unit or house
- Share an apartment, unit or house
- Reside in student apartment complexes or hostels
- Live with a family in a home stay or boarding arrangement

Please note that January/February is a busy time with many students all looking for accommodation and that prices and facilities vary. The following list includes some of the residences available in Melbourne of which PSA does not endorse any particular accommodation services, so please make sure you investigate the residences directly for more information and to find accommodation that suits your particular needs.

## RENT AN APARTMENT/UNIT/HOUSE

*(costs are an indication only)*

Renting your own apartment or house through a Real Estate Agent or a private landlord offers students privacy and independence. Most rental properties are unfurnished so initial setting up costs can include rent, food, telephone calls, gas and/or electricity for 12 months. (You may also need to buy furniture and other household goods). A bond will usually need to be paid before you move in.

Weekly rent:

- Flat/Apartment: one bedroom: on average \$450
- Flat/Apartment: two bedroom: on average \$550
- House: on average \$900

When you share a flat, apartment or house everyone shares the kitchen, bathroom, laundry and living rooms. You have your own bedroom.

## SHARE AN APARTMENT/UNIT/HOUSE

Moving into an established household that has a vacant bedroom is often an easier and less costly option than leasing a vacant house or flat. You will pay rent for your own bedroom and share the bathroom, kitchen and living areas with other people living in the household.

Please notify Patrick School of the Arts if you are looking to share accommodation and we will attempt to connect with other PSA students wishing to share accommodation.

[www.flatmates.com.au](http://www.flatmates.com.au)

[www.flatmatefinders.com.au](http://www.flatmatefinders.com.au)



## STUDENT APARTMENT OR PRIVATE HOSTEL

*(costs are an indication only):*

---

### **Melbourne Connection Traveller's Hostel**

Ph: +61 3 9642 4464 e: info@melbourneconnection.com [www.melbourneconnection.com](http://www.melbourneconnection.com)

---

**The Friendly Backpacker** Ph: +61 3 9670 1111 or 1800 249 207 e: renouf@friendlygroup.com.au  
[www.friendlygroup.com.au](http://www.friendlygroup.com.au)

---

**Arrow on Swanston** e: accommodation@arrowonswanston.com.au Ph: +61 3 9225 9000  
[www.arrowonswanston.com.au](http://www.arrowonswanston.com.au)

---

**Merlin Apartments** e: jyew@melinproperties.com.au Ph: + 61 3 9670 7788  
[www.merlinproperties.com.au](http://www.merlinproperties.com.au)

---

**Uni Lodge on Flinders** e: unilodge.flinders@unilodge.com.au Ph: +61 3 9224 1500  
[www.unilodge.com.au](http://www.unilodge.com.au)

---

**Uni Lodge on Swanston** e: unilodge.swanston@unilodge.com.au Ph: +61 3 9224 7888

---

**UCA Melbourne – University City Apartments** e: info@unicityapartments.com.au  
[www.unicityapartments.com.au](http://www.unicityapartments.com.au)

---

**Carlton College Hostels** e: admin@carltoncollege.com.au Ph: + 61 3 9347 3238  
Fax: +61 3 9842 3813 [www.carltonmelbournecollege.com.au](http://www.carltonmelbournecollege.com.au)

---

**Bouverie Residence** e: admin@rooms.net.au Ph: + 61 3 9347 8000 [www.rooms.net.au](http://www.rooms.net.au)

---

**Dalkeith Hostel** e: dalkeithhouse@hotmail.com Ph: 0409 016 521

---

**Elgin Lodge** e: elginlodge@dodo.com.au Ph: + 61 3 9859 4862 [www.rentfast.com.au](http://www.rentfast.com.au)

---

**Georges Terrace** e: georgeterrace@hotmail.com Ph: + 61 3 9354 9991

---

**Grattan House** e: grattanhouse@optusnet.com.au Ph: + 61 3 9404

---

**Monet Residence** e: admin@rooms.net.au [www.rooms.net.au](http://www.rooms.net.au)

---

**YWCA Flats** e: rhouse@ywca.net w: Ph: + 61 3 9429 4374 [www.ywca.net](http://www.ywca.net)

---



# ACCOMMODATION

## LIVE WITH A FAMILY (HOMESTAY)

*(costs are an indication only)*

If this is your first experience of living away from home you may find the transition to tertiary life much easier if you don't have to adjust to independent living at first. Homestay or full board accommodation is usually provided in a suburban household with your own fully furnished room, 2-3 meals per day and all household bills except telephone calls are included in the overall cost of approximately A\$180 A\$190 per week. A Private Homestay Consultant can arrange a place for you. The placement fee is usually \$100.

Below is a list of some private Home stay consultants:

- **Australian Student Accommodation Placements (ASAP)** Contact: David Wood  
e: davidw@studenthomestay.com.au Ph: +61 3 9812 0761 **www.studenthomestay.com.au**
- **Familystay Australia** Contact: Margaret Vella e: familystay@bigpond.com  
Ph: +61 3 9574 7476
- **Homestay Victoria** Contact: Stefan Morgan e: sandra@homestay-australia.com  
Ph: +61 3 9642 1566 M: 0412 036 579 **www.homestay-australia.com**
- Student Accommodation Services e: saccomm@studentaccommodation.com.au  
Ph: + 61 3 9495 0007 **www.studentaccommodation.com.au**

*Disclaimer: Patrick School of the Arts takes no responsibility for the accuracy of the above information. The accommodation facilities referred to on this site are not owned or operated by Patrick School of the Arts, nor do they have any affiliation with Patrick School of the Arts. Patrick School of the Arts does not endorse the use of any of the accommodation options listed we are simply providing public available information. Patrick School of the Arts takes no responsibility for accommodation or the services provided by these organisations. Patrick School of the Arts welcomes students from around the country and offers advice and assistance on re housing, finding work and general advise in order to become home established in a new state.*





# TRANSPORTATION

## TRAMS

**Tram number: 6 Glen Iris** runs from Swanston St in the city to High Street, and along High Street, terminating at Malvern Road, Glen Iris.

**Tram number: 78** North Richmond to Prahran travels along Chapel Street and stops on the corner of High Street.

## TRAIN

**Sandringham Line:** The campus is a few minutes walk from Prahran or Windsor stations

Visit Public Transport Victoria ( PTV ) and find the quickest way to get to your Melbourne Polytechnic campus.

Furthermore, download the brilliant **Citymapper app** to assist you with your public transport options to PSA.





# CAMPUS

Patrick School of the Arts is based in Prahran, at the Melbourne Polytechnic campus. The facilities are based on the Australian Institute of Sport's dynamic training facilities catering for all aspects of a performer's needs, including:

- An in-house gym and pilates studio
- Fully air conditioned and heated studios
- Extensive wardrobe departments
- Access to all the facilities that Melbourne Polytechnic has to offer.



# CAMPUS MAP



## D BLOCK

D Block Studio 1  
 Studios 4, 5, 6, 7 & 8  
 Student Common Room  
 Gym  
 Change Rooms

## E BLOCK

High Street Entrance  
 Reception  
 Studios 1, 2, 3, 9 & 10  
 Lecture Theatre  
 Apprentice Cafe  
 Toilets

## F BLOCK

Academy Classrooms  
 Patrick Management  
 Faculty Offices

## H BLOCK

David Williamson Theatre





# AUDITIONS

Entry to Patrick School of the Arts is strictly by audition only. Students are selected on the basis of talent and their future potential to benefit from the training provided.

During their audition, each candidate will audition alongside a large volume of other auditionees in an audition with a dancing component.

Auditions are held in July at the PSA studios. Audition tour dates will be posted on our social media and website.





## ALUMNI

Our Alumni have performed in shows all over the world.



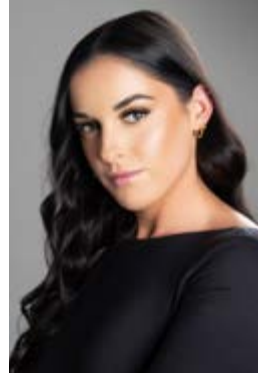
### Tiggy Treloar

Various corporate/commercial events inc. with Virgin Australia, AGL Energy, Katy Perry AFL Grand Final and for Nathan M. Wright, Kate Wornatd, Yvette Lee & more



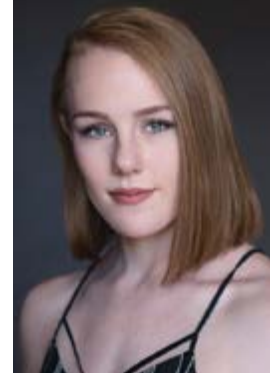
### Sophie St Leon

Showgirl at Royal Palace, Kirwiller (France)



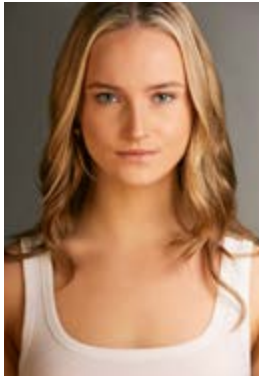
### Molly Kealey

Cosentino (Aus), Draculas (Aus)



### Elorah Cooper

Cabaret De Paris (Aus), Norweigan Cruise Line, Royal Carribean Cruise Line, Viva La Broadway (Macau), La Nouvelle Eve (Paris)



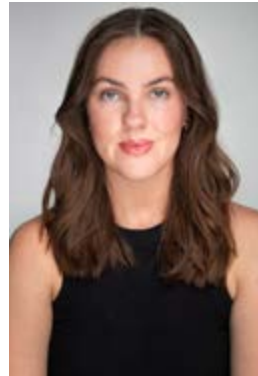
### Lizzie Kelly

Norweigan Cruise Line Dancer/Lead Vocalist, Better Man movie, Corporate/Commercial work for Yvette Lee, Southern Beat Productions & more



### Oceane Le Boudier

Royal Carribean Cruise Line, La Nouvelle Eve (France)



### Chloe Adkins

Royal Carribean Cruise Line, Dancer/Vocalist



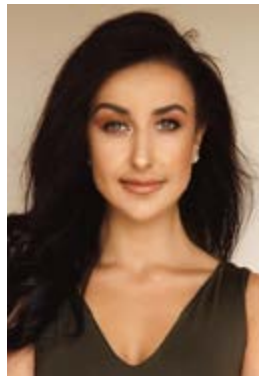
### Lachlan Bastin

RWS Global, Holland America Line, Featured Dancer



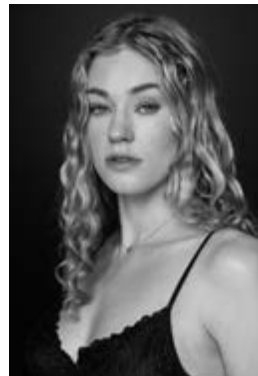
### Cara Ellis

Showgirl at Le Moulin Rouge (France)



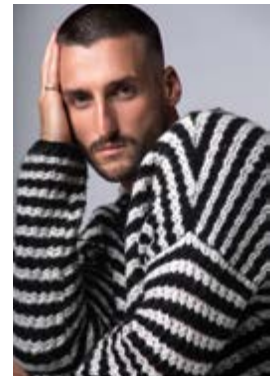
### Fran Buscema

Cabaret De Paris (Aus), Royal Carribean Cruise Lines, La Bouche Showgirls (Germany)



### Lauren Jaksetic

Royal Carribean Cruise Lines



### Ned Zaina

Paris Hilton 'Icons Only' show, Better Man movie, Lana Del Ray tour, Nicole Scherzinger 'World Pride Bondi Beach Party', Magic Mike Live, Kylie Minogue 'People's Choice Awards'



# PATRICK MANAGEMENT



## **PATRICK MANAGEMENT**

At Patrick Management, we are committed to guiding and advancing the careers of performing artists. Our passion lies in nurturing new talent, while also taking great pride in propelling established artists to new heights. We prioritize achieving success in an environment built on trust and collaboration. We represent artists with whom we share a deep artistic connection and belief. This genuine partnership enables us to support both the industry and our clients with unwavering conviction and integrity. We proudly represent a diverse roster of talent, from emerging artists to seasoned professionals, all of whom are enjoying thriving careers both in Australia and Internationally.

To discuss representation with Patrick Management, please contact us with your CV, headshot and relevant reels. Email: [info@patrickmanagement.com.au](mailto:info@patrickmanagement.com.au)





# PATRICK MANAGEMENT



**LAURA WALLBRIDGE**  
TALENT AGENT

[laura@patrickstudiosaustralia.com.au](mailto:laura@patrickstudiosaustralia.com.au)

With a wealth of experience in both public relations and artist management, Laura Wallbridge has significant experience in the contemporary music industry prior to her current role at Patrick Management.

Throughout her career at EMI Music and Universal Music, she managed high-profile publicity campaigns for artists such as Missy Higgins, Katy Perry, Keith Urban, Paul Kelly, and Coldplay, among others. As an artist manager, Laura has played a pivotal role in securing international record deals, securing booking agents, and organizing sold-out national and international tours.

Her efforts helped an artist's single achieve 3x platinum certification, and she represented talent nominated for ARIA Awards, and with music featured on popular TV shows like Gossip Girl and American Horror Story, as well as in a national Woolworths campaign.

Before joining Patrick Management, Laura contributed her public relations expertise to the media teams behind major events such as the Australian Open, the Logies, Cirque du Soleil, Disney on Ice, and more.



**RICHARD JOHNSTON**  
TALENT AGENT

[richard@patrickstudiosaustralia.com.au](mailto:richard@patrickstudiosaustralia.com.au)

Richard brings over a decade of experience in Talent Management, having worked across range of leading agencies in London.

He began his career as an actor in the United Kingdom before transitioning into talent management. Drawing on his deep understanding of the industry from both sides of the spotlight,

Richard has built a successful career representing talent across television, film, and musical theatre. Richard cut his teeth in the agency world under the guidance of Shane Collins at Shane Collins Associate. He helped represent clients in a plethora of west end productions including: Les Miserable, Wicked, Hamilton, Book of Mormon, Matilda and Phantom of the Opera. He then joined the renowned team at Troika Talent (now YM&U Entertainment), where he helped manage some of the UK's most prominent and highly respected actors. Most recently, Richard ran Creative Screen Management, where he oversaw a dynamic and diverse roster of clients, helping to nurture and guide their careers across a wide spectrum of television, film and theatre.

Throughout his career he has worked with a variety of companies including Netflix, BBC, Amazon Prime, Disney+, Paramount, Apple TV+ and more.



## ADMINISTRATION TEAM



**HELEN HAINES**  
FINANCE/BUSINESS MANAGER  
[accounts@patrickstudiosaustralia.com.au](mailto:accounts@patrickstudiosaustralia.com.au)



**OLIVIA PARK**  
STUDIO MANAGER  
[olivia@patrickstudiosaustralia.com.au](mailto:olivia@patrickstudiosaustralia.com.au)



**MIA KAUFMAN**  
RECEPTION  
[info@patrickstudiosaustralia.com.au](mailto:info@patrickstudiosaustralia.com.au)



**RYAN MARSHALL**  
RECEPTION  
[info@patrickstudiosaustralia.com.au](mailto:info@patrickstudiosaustralia.com.au)



# PATRICK SCHOOL OF THE ARTS



Level 2, 140 High Street Prahran VIC 3181  
P (03) 9521 1735 | [info@patrickstudiosaustralia.com.au](mailto:info@patrickstudiosaustralia.com.au)

[www.psarts.com.au](http://www.psarts.com.au)

