

PATRICK
SCHOOL
OF THE ARTS



2027



PUSH HARDER
REACH FURTHER
SOAR HIGHER

MUSICAL THEATRE



WELCOME



Patrick School of the Arts (PSA) is now one of the most recognised performing arts institutions in Australia.

Our graduates are seen in all major Musical Theatre productions across Australia and abroad. They are recognised as being trained to a more athletic and physical standard than what has been seen in this country for a long time.

Patrick School of the Arts's Full-time Musical Theatre Course builds on the school's strong dance reputation and complements it with a focused and intense drama and vocal training.

Delivering on behalf of Ausdance: RTO 20949
 CUA30120 Certificate III in Dance
 CUA40520 Certificate IV in Musical Theatre
 CUA50220 - Diploma of Musical Theatre

This cutting-edge course exposes students to industry leaders who will teach and prepare them for the Musical Theatre and Acting worlds that await the next company of talented and vibrant young entertainers.

All of the teachers in the course are carefully chosen and are currently working in many areas of the Musical Theatre industry. Their passion and willingness to get the next generation polished and ready for action is our commitment.

Acceptance into the course is by audition only.

All national accreditation for embedded VET courses will be subject to the Government's approval annually and confirmed in late November.

Our graduates
 are seen
 in all major
 productions
 across Australia
 and abroad



COURSE OUTLINE

Subjects covered in the curriculum include:

- Dancing: Ballet, Jazz, Tap, Musical Theatre
- Acting
- Music Theory
- Audition Preparation
- Group and Private Vocal Classes
- Audition Workshops
- Dialect/Accent Coaching
- Musical Theatre Choreography and Repertoire

Additionally, the curriculum is supplemented and supported by components that encourage core muscular strength and support for mobility, flexibility and injury prevention.

A 45-minute private vocal lesson every week during term with one of our vocal teachers is included for second year students only.

Master classes are held throughout the year incorporating all aspects of the industry, with instruction from current industry professionals and international guests. Students perform throughout the year for producers, directors, choreographers and leading experts within the Entertainment Industry. Performances include a first term showcase, mid year production, and end of year showcase. The third year program includes three milestone performances. A Musical Review, a Blackbox Musical Production and a Large Scale Production at the end of the year.



Patrick School of the Arts is partnered with The Australian Dance Council - Ausdance VIC RTO 20949 for

CUA30120 Certificate III in Dance.

CUA40520 Certificate IV in Musical Theatre.

CUA50220 Diploma of Musical Theatre

FIRST YEAR CUA30120 CERTIFICATE III IN DANCE

CUACHR311 **CORE** Develop basic dance composition skills

CUADAN315 **ELECTIVE** Increase depth of jazz dance techniques

CUADAN316 **ELECTIVE** Increase depth of ballet dance techniques

CUAACT311 **ELECTIVE** Develop basic acting techniques for performance

CUAVOS312 **ELECTIVE** Develop vocal techniques for use in performance

CUADAN321 **ELECTIVE** Increase depth of tap dance techniques

CUADAN331 **CORE** Integrate rhythm into movement activities

CUAIND311 **CORE** Work effectively in the creative arts industry

CUAPRF314 **ELECTIVE** Develop audition techniques

CUAPRF316 **ELECTIVE** Develop basic musical theatre techniques

CUAPRF317 **CORE** Develop performance techniques

CUAWHS311 **CORE** Condition body for dance performance

CUAMWB401 **ELECTIVE** Develop & implement own self-care plan in the creative industries



DELIVERY OF VET COURSES

Patrick School of the Arts is partnered with The Australian Dance Council - Ausdance VIC RTO 20949 for
CUA30120 Certificate III in Dance.
CUA40520 Certificate IV in Musical Theatre.
CUA50220 Diploma of Musical Theatre

CUA40520	SECOND YEAR CERTIFICATE IV IN MUSICAL THEATRE	
CUAACT411	ELECTIVE	Use acting techniques in performance
CUACHR411	ELECTIVE	Create and perform dance pieces
CUAWHS411	ELECTIVE	Apply movement and behavioural principles to conditioning
CUAACT412	CORE	Develop and apply acting techniques for musical theatre
CUADAN420	ELECTIVE	Develop expertise in tap dance techniques
CUADAN422	CORE	Develop dance techniques for musical theatre
CUAPPR414	CORE	Develop self as artist
CUAPRF418	CORE	Perform solo in a musical theatre context
CUAPRF419	CORE	Perform in a musical theatre ensemble
CUAVOS411	CORE	Develop singing techniques for musical theatre
CUAVOS412	ELECTIVE	Develop specialist singing techniques for musical theatre repertoire
CUAVOS413	CORE	Develop vocal techniques for musical theatre
CUAIND411	ELECTIVE	Extend expertise in specialist creative fields
CUAPPR314	ELECTIVE	Participate in collaborative creative projects
CUAPRF314	ELECTIVE	Develop audition techniques



DIPLOMA PROGRAMS

Patrick School of the Arts is partnered with The Australian Dance Council - Ausdance VIC RTO 20949 for CUA30120 Certificate III in Dance.

CUA40520 Certificate IV in Musical Theatre.

CUA50220 Diploma of Musical Theatre

Participation in the Musical Theatre 3rd Year program is subject to audition at the conclusion of the 2nd year of your Musical Theatre training.

THIRD YEAR DIPLOMA OF MUSICAL THEATRE

CUADAN517	Refine dance partnering techniques	Gp A
CUAPPR512	Develop sustainability of own professional practice	Gp A
CUAPRF511	Refine performance techniques	C
CUAPRF513	Prepare for and perform in competitive environments	C
CUAWHS413	Incorporate anatomy principles into skill development	Gp A
CUAWHS511	Maintain a high level of fitness for performance	C
CUAIND412	Provide freelance services	C
CUAMPF417	Develop vocal techniques	C
CUAPRF514	Refine musical theatre techniques	C
CUAMPF615	Develop advanced vocal techniques	Gp A
CUAMUP511	Apply theatrical make-up and hairstyles	Gp A
CUAPRF419	Perform in a musical theatre ensemble	Gp A
CUAWHS412	Participate in gym and resistance training for performances	Gp B
CUAACT411	Use acting techniques in performance	Gp B
CUAPRF420	Develop on-camera performance skills	Imported
CUADAN413	Develop expertise in jazz dance techniques	Imported

3RD YEAR - 2027

Participation in the third year of the PSA musical theatre program is subject to re-audition at the conclusion of 2nd year. This year provides a significant opportunity for students to step up and become self-motivated, self-sufficient professional performing artists. This final year of the PSA Musical Theatre program demands students be ready to receive feedback & take valuable guidance and implement it in their own practice. It provides the opportunity to become the performer you have trained to be, to synthesize all you have learned whilst making meaningful connections with the industry.



MUSICAL REVIEW

3rd Year Musical Theatre students will explore the works of renowned musical theatre composers and lyricists. They will work with industry choreographers and directors and present scenes and songs at the end of Term 1.

BLACKBOX MUSICAL

3rd Year Students will perform a full-length book musical, working alongside a team of industry creatives.



PRODUCTION MUSICAL

3rd year students will perform in a full-scale Production Musical. This will expose students to more industry leading creatives in a rehearsal and production environment, helping them build a strong network in the industry.

INTENSIVE TRAINING

3rd year students will work intensively across four days each week (Mon - Thurs). Training will include vocal audition repertoire, acting audition repertoire, voice and dialect, dance, and rehearsals for the three major productions (Musical Review, Blackbox, and Production musicals).

Students in their 3rd year of Musical Theatre at PSA will be able to work outside of their PSA commitments, and encouraged to pursue employment opportunities as professional performing artists.

FEES

Fees for the 3rd Year Musical Theatre program are \$10,000 + a \$1000 Admission Fee upon acceptance.

FEEDBACK

The teaching faculty continually liaise with the Directors of Patrick School of the Arts to follow the individual progress of each student.

Students have a number of core teachers who develop technique and undertake regular assessments and are constantly instructed and guided by industry professionals across a variety of disciplines and styles.



WORKSHOPS & PERFORMANCE

Students perform throughout the year for producers, directors, choreographers and leading experts within the entertainment industry. This is designed to provide a clear pathway to building a professional network and employment after their study.



UNIFORM

FEMALE

- Black high-waisted booty shorts (Jazz)
- Black high-waisted leggings (Jazz)
- Black crop top (Jazz)
- Black tank leotard (Jazz)
- Black fashion leotard (Jazz/Musical Theatre)
- Black open back leotard (Ballet)
- Black lace wrap ballet skirt (Optional)
- Ultra soft convertible pink or flesh-coloured tights (Ballet)
- Ultra soft convertible black tights (Ballet/Jazz)
- Black fishnet tights (Musical Theatre)
- Pink ballet shoes
- Elizabeth 3" Soft Sole Character Heel in Beige
- Black tap shoes
- Black jazz shoes (split sole from Bloch/Energetiks/Capezio)
- Black Laduca dance boots - LAURA 3" BOOT SOFT SOLE

MALE

- Black unitard (Ballet)
- Black ballet tights (Ballet)
- Black shorts (Jazz)
- Black singlet (Jazz)
- Support (from Bloch/Energetiks/Capezio)
- Black ballet shoes
- Black tap shoes
- Black jazz shoes (split sole from Bloch/Energetiks/Capezio)

Additional appropriate black rehearsal wear may be adorned during arts classes.

No offensive or outlandish clothing is to be worn.

Other uniform shoes etc. may be required as directed for specific performances.

FEE STRUCTURE

In 2027 we will be offering the Certificate III & IV for our courses through Ausdance VIC.

We will be offering 2 options for our students in 2027, Accredited and Non-Accredited.

With the Accredited course you will receive a Certificate III & IV at the end of it. Please note that if you require any financial assistance from Services Australia (Centrelink), you will need to do an Accredited course.

ACCREDITED COURSE

The Accredited Course fees are \$13, 800 Per Year. (\$13, 100 Tuition Fee + \$700 Certification Registration fee.)

You will be invoiced for the \$700 fee in December 2026 to be paid by the 28th January 2027.

NON-ACCREDITED COURSE

The Non-Accredited Tuition Fee is \$13, 100 Per Year.

ADMISSION FEE

You will also be required to pay a non-refundable \$1, 000 Admission fee two weeks after accepting your position.

TIMELINE OF PAYMENTS

- Non-refundable acceptance charge - \$1, 000, invoiced once the position has been accepted, and due for payment in 14 days.
- Certification registration fee (if applicable) - \$700, invoiced December 2026 and due for payment in January 2027.
- Tuition fees - \$13, 100 invoiced in January 2027.

You can set up a payment plan for weekly, fortnightly and monthly instalments. Direct debit details will be sent with tuition invoices in January.

Please contact Accounts for more information.

Email: accounts@patrickstudiosaustralia.com.au

**Fees are subject to change*



ATTENDANCE

100% attendance is expected from all students at all scheduled classes, performances and special events throughout their time at Patrick School of the Arts. Failure to uphold a 95% attendance rate during their time here will result in a review of the student's enrolment within Patrick School of the Arts.

For safety and PSA protocol, all students are expected to sign in at reception every day upon arrival and exit. If for any reason students are anticipating their absence, arriving late to school, or if a student needs to leave school early, the student must contact their coordinator as soon as possible.

If a student is anticipating either a late arrival, an early leave, or a full absence, they must notify staff in advance. Staff must also be notified of any last minute absences, late arrivals, or early departures. To notify staff, students must email the following address, and not the staff directly: attendance@patrickstudiosaustralia.com.au.

Patrick School of the Arts accepts students on the basis that they are in good health and fitness. Should anything prevent students from engaging in physical training, they must notify Reception or their coordinator immediately to avoid any further risk to their health. In the event of an injury occurring in class, students must report immediately to the front desk in order for the appropriate medical aid/support to be administered by the staff. First Aid kits are available at reception for any minor injuries.





IMPORTANT DATES

PERIOD	START	FINISH
ORIENTATION DAY	February 1, 2027	
TERM 1	February 1, 2027	March 25, 2027
TERM 2	April 12, 2027	June 25, 2027
TERM 3	July 12, 2027	September 17, 2027
TERM 4	October 4, 2027	December 17, 2027

These dates are indicative only and are not finalised.





TODD PATRICK FOUNDER & STUDIO DIRECTOR

Patrick School of the Arts (PSA) is now one of the most recognised performing arts institutions in Australia.

Todd Patrick is a renowned choreographer and artistic director based in Melbourne, Australia. Todd's long-spanned career has seen him travel all over the world working for some of the most industry-respected companies as both a dancer, choreographer and creative director.

He began his career with the internationally acclaimed company, Walt Disney Studios before beginning an impressive stint across Europe and Asia with the prestigious Lido in Paris, France, Royal Palace Strasbourg, W hotel South Korea and Jupiter's Casino in the Gold Coast, Australia.

The credits that Todd has to his name as a choreographer and dancer are nothing short of impressive, having worked with the likes of Crown Melbourne and Star City, Australian pop acts Vanessa Amorosi, Ricki-Lee Coulter, Zoe Badwi, Kate Ceberano and Dannii Minogue not to mention MAC Cosmetics, Christian Dior, Versace, Issey Miyake, Chanel and Gucci alongside Giselle Bundchen, John Galliano and Karl Lagerfeld.

In the corporate world, Todd has choreographed events for some of Australia's biggest companies: KPMG, Chadstone the Fashion Capital, NAB, Victoria Racing and Price Waterhouse Coopers.

Todd founded Patrick Studios Australia, now Patrick School of the Arts, which altogether encompasses a Full-time Performing Arts, Musical Theatre and Professional Development Course as well as Patrick Arts High - High School for the Performing Arts to specifically train dancers for a professional career in the arts. In addition, he started Patrick Management to help students and professional performers break into the industry and foster their career.

His students and talent are now following in his footsteps and can be seen around the world in shows like Wicked, Shout, Chicago, 42nd Street, Hamilton, West Side Story, Beauty and the Beast, Moulin Rouge, Burlesque, Guys & Dolls to name a few, and in venues across Europe including The Lido, Moulin Rouge, Royal Palace and La Nouvelle Eve. His students frequent in music videos, TV programs, cruise ships, commercial functions and fashion parades with highly acclaimed directors and choreographers.



TEACHING



TERTIARY CO-ORDINATORS



DAVID WISKEN
MUSICAL THEATRE
david@patrickstudiosaustralia.com.au



ANNA BURGESS
PERFORMING ARTS
anna@patrickstudiosaustralia.com.au



JAN DI PIETRO
MUSICAL THEATRE
jan@patrickstudiosaustralia.com.au



MERRYN TIERNEY
DANCE
education@patrickstudiosaustralia.com.au



ACCOMMODATION

Patrick School of the Arts does not have its own on-campus student accommodation, however there are several housing and accommodation options available.

Students can choose to:

- Rent an apartment, unit or house
- Share an apartment, unit or house
- Reside in student apartment complexes or hostels
- Live with a family in a home stay or boarding arrangement

Please note that January/February is a busy time with many students all looking for accommodation and that prices and facilities vary. The following list includes some of the residences available in Melbourne of which PSA does not endorse any particular accommodation services, so please make sure you investigate the residences directly for more information and to find accommodation that suits your particular needs.

RENT AN APARTMENT/UNIT/HOUSE

(costs are an indication only)

Renting your own apartment or house through a Real Estate Agent or a private landlord offers students privacy and independence. Most rental properties are unfurnished so initial setting up costs can include rent, food, telephone calls, gas and/or electricity for 12 months. (You may also need to buy furniture and other household goods). A bond will usually need to be paid before you move in.

Weekly rent:

- Flat/Apartment: one bedroom: on average \$450
- Flat/Apartment: two bedroom: on average \$550
- House: on average \$900

When you share a flat, apartment or house everyone shares the kitchen, bathroom, laundry and living rooms. You have your own bedroom.

SHARE AN APARTMENT/UNIT/HOUSE

Moving into an established household that has a vacant bedroom is often an easier and less costly option than leasing a vacant house or flat. You will pay rent for your own bedroom and share the bathroom, kitchen and living areas with other people living in the household.

Please notify Patrick School of the Arts if you are looking to share accommodation and we will attempt to connect with other PSA students wishing to share accommodation.

www.flatmates.com.au

www.flatmatefinders.com.au



ACCOMMODATION

STUDENT APARTMENT OR PRIVATE HOSTEL

(costs are an indication only):

Melbourne Connection Traveller's Hostel

Ph: +61 3 9642 4464 e: info@melbourneconnection.com www.melbourneconnection.com

The Friendly Backpacker Ph: +61 3 9670 1111 or 1800 249 207 e: renouf@friendlygroup.com.au
www.friendlygroup.com.au

Arrow on Swanston e: accommodation@arrowonswanston.com.au Ph: +61 3 9225 9000
www.arrowonswanston.com.au

Merlin Apartments e: jyew@melinproperties.com.au Ph: + 61 3 9670 7788
www.merlinproperties.com.au

Uni Lodge on Flinders e: unilodge.flinders@unilodge.com.au Ph: +61 3 9224 1500
www.unilodge.com.au

Uni Lodge on Swanston e: unilodge.swanston@unilodge.com.au Ph: +61 3 9224 7888

UCA Melbourne – University City Apartments e: info@unicityapartments.com.au
www.unicityapartments.com.au

Carlton College Hostels e: admin@carltoncollege.com.au Ph: + 61 3 9347 3238
Fax: +61 3 9842 3813 www.carltonmelbournecollege.com.au

Bouverie Residence e: admin@rooms.net.au Ph: + 61 3 9347 8000 www.rooms.net.au

Dalkeith Hostel e: dalkeithhouse@hotmail.com Ph: 0409 016 521

Elgin Lodge e: elginlodge@dodo.com.au Ph: + 61 3 9859 4862 www.rentfast.com.au

Georges Terrace e: georgeterrace@hotmail.com Ph: + 61 3 9354 9991

Grattan House e: grattanhouse@optusnet.com.au Ph: + 61 3 9404

Monet Residence e: admin@rooms.net.au www.rooms.net.au

YWCA Flats e: rhouse@ywca.net w: Ph: + 61 3 9429 4374 www.ywca.net



ACCOMMODATION

LIVE WITH A FAMILY (HOMESTAY)

(costs are an indication only)

If this is your first experience of living away from home you may find the transition to tertiary life much easier if you don't have to adjust to independent living at first. Home stay or full board accommodation is usually provided in a suburban household with your own fully furnished room, 2-3 meals per day and all household bills except telephone calls are included in the overall cost of approximately A\$180 A\$190 per week. A Private Homestay Consultant can arrange a place for you. The placement fee is usually \$100.

Below is a list of some private Homestay consultants:

- **Australian Student Accommodation Placements (ASAP)** Contact: David Wood
e: davidw@studenthomestay.com.au Ph: +61 3 9812 0761 **www.studenthomestay.com.au**
- **Familystay Australia** Contact: Margaret Vella e: familystay@bigpond.com
Ph: +61 3 9574 7476
- **Homestay Victoria** Contact: Stefan Morgan e: sandra@homestay-australia.com
Ph: +61 3 9642 1566 M: 0412 036 579 **www.homestay-australia.com**
- Student Accommodation Services e: sacomm@studentaccommodation.com.au
Ph: + 61 3 9495 0007 **www.studentaccommodation.com.au**

Disclaimer: Patrick School of the Arts takes no responsibility for the accuracy of the above information. The accommodation facilities referred to on this site are not owned or operated by Patrick School of the Arts, nor do they have any affiliation with Patrick School of the Arts. Patrick School of the Arts does not endorse the use of any of the accommodation options listed we are simply providing public available information. Patrick School of the Arts takes no responsibility for accommodation or the services provided by these organisations. Patrick School of the Arts welcomes students from around the country and offers advice and assistance on re housing, finding work and general advice in order to become home established in a new state.



TRANSPORTATION

TRAMS

Tram number: 6 Glen Iris runs from Swanston St in the city to High Street, and along High Street, terminating at Malvern Road, Glen Iris.

Tram number: 78 North Richmond to Prahran travels along Chapel Street and stops on the corner of High Street.

TRAIN

Sandringham Line: The campus is a few minutes walk from Prahran or Windsor stations

Visit Public Transport Victoria (PTV) and find the quickest way to get to your Melbourne Polytechnic campus.

Furthermore, download the brilliant **Citymapper app** to assist you with your public transport options to PSA.





CAMPUS

Patrick School of the Arts is based in Prahran, at the Melbourne Polytechnic campus. The facilities are based on the Australian Institute of Sport's dynamic training facilities catering for all aspects of a performer's needs, including:

- An in-house gym and pilates studio
- Fully air conditioned and heated studios
- Extensive wardrobe departments
- Access to all the facilities that Melbourne Polytechnic has to offer.





CAMPUS MAP



D BLOCK

D Block Studio 1
Studios 4, 5, 6, 7 & 8
Student Common Room
Gym
Change Rooms

E BLOCK

High Street Entrance
Reception
Studios 1, 2, 3, 9 & 10
Lecture Theatre
Apprentice Cafe
Toilets

F BLOCK

Academy Classrooms
Patrick Management
Faculty Offices

H BLOCK

David Williamson Theatre



AUDITIONS

Entry to Patrick School of the Arts is strictly by audition only. Students are selected on the basis of talent and their future potential to benefit from the training provided.

During their audition, each candidate will audition alongside a large volume of other auditionees in an audition with a singing, acting and dancing component.

Auditions are held on 14th June at the PSA studios. Audition tour dates will be posted on our social media and website.





ALUMNI

Our Alumni have performed in shows all over the world.



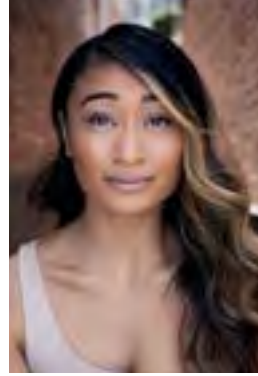
Adam Noviello

Priscilla, Queen of the Desert; Matilda; Tommy; Charlie and the Chocolate Factory; Chess; Jesus Christ Superstar; Hedwig and the Angry Inch



Alex Given

South Pacific; Georgy Girl; Holding the Man; Book of Mormon; Singing in the Rain (UK), Elf (UK), Guys & Dolls (UK)



Elandra Eramiha

Kiss of the Spider Woman; Aladdin; Bring it On; Memphis; Hamilton (AUS)



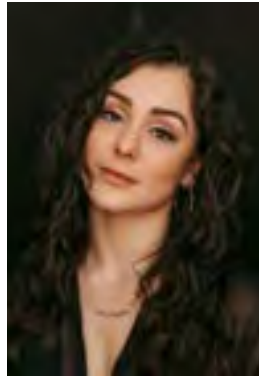
Samantha Dodemaide

Dorothy - The Wizard of Oz; Charity - Sweet Charity; Chicago; Singing in the Rain; Anything Goes; Evita; Moulin Rouge (AUS), Moulin Rouge Broadway



Taylor Scanlan

Cats Asia Tour; Lord of the Flies; Charlie and the Chocolate Factory; Mary Poppins; Sunset Boulevard; Beetlejuice (AUS)



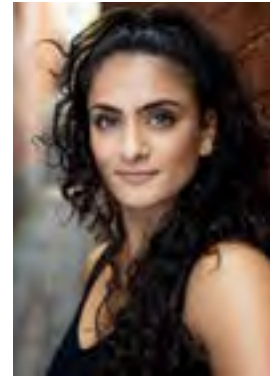
Karli Dinardo

Dance Captain - Hamilton US; Flashdance US; Moulin Rouge - Broadway; Dancin (Original Broadway Cast)



Melanie Hawkins

Strictly Ballroom; Wicked; King Kong; Saturday Night Fever; Jesus Christ Superstar



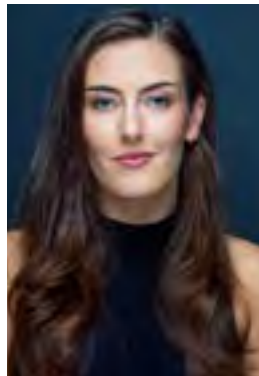
Luca Dinardo

Bring It On - The Musical; Hamilton (AUS); West Side Story (AUS); Rent (Choreography); Kinky Boots (Choreography); West Side Story (Choreography); Muriels Wedding (UK) (Choreography)



Tyler Lotzof

Cats Asia Tour; Dirty Dancing On Stage (UK); The Artist (UK); Peter Pan at the London Palladium; Moulin Rouge (World Tour)



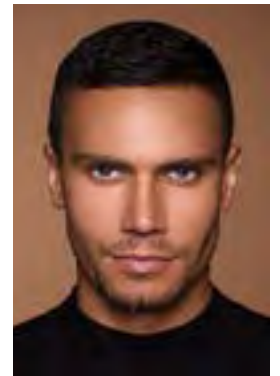
Kahlia Davis

Moulin Rouge (AUS); Moulin Rouge (Netherlands); Moulin Rouge (World Tour)



Stefan Lagoulis

Aladdin; Faust; Hamilton (AUS/NZ); Moulin Rouge (AUS); West Side Story; Burlesque (UK); Hercules (UK)



Euan Fistrovic-Doidge

Marius - Les Miserables; Priscilla, Queen of the Desert - Felicia; Joseph; Cruel Intentions



PATRICK MANAGEMENT



PATRICK MANAGEMENT

At Patrick Management, we are committed to guiding and advancing the careers of performing artists. Our passion lies in nurturing new talent, while also taking great pride in propelling established artists to new heights. We prioritize achieving success in an environment built on trust and collaboration. We represent artists with whom we share a deep artistic connection and belief. This genuine partnership enables us to support both the industry and our clients with unwavering conviction and integrity. We proudly represent a diverse roster of talent, from emerging artists to seasoned professionals, all of whom are enjoying thriving careers both in Australia and Internationally.

To discuss representation with Patrick Management, please contact us with your CV, headshot and relevant reels. Email: info@patrickmanagement.com.au



PATRICK MANAGEMENT



LAURA WALLBRIDGE
TALENT AGENT

laura@patrickstudiosaustralia.com.au

With a wealth of experience in both public relations and artist management, Laura Wallbridge has significant experience in the contemporary music industry prior to her current role at Patrick Management.

Throughout her career at EMI Music and Universal Music, she managed high-profile publicity campaigns for artists such as Missy Higgins, Katy Perry, Keith Urban, Paul Kelly, and Coldplay, among others. As an artist manager, Laura has played a pivotal role in securing international record deals, securing booking agents, and organizing sold-out national and international tours.

Her efforts helped an artist's single achieve 3x platinum certification, and she represented talent nominated for ARIA Awards, and with music featured on popular TV shows like Gossip Girl and American Horror Story, as well as in a national Woolworths campaign.

Before joining Patrick Management, Laura contributed her public relations expertise to the media teams behind major events such as the Australian Open, the Logies, Cirque du Soleil, Disney on Ice, and more.



RICHARD JOHNSTON
TALENT AGENT

richard@patrickstudiosaustralia.com.au

Richard brings over a decade of experience in Talent Management, having worked across range of leading agencies in London.

He began his career as an actor in the United Kingdom before transitioning into talent management. Drawing on his deep understanding of the industry from both sides of the spotlight,

Richard has built a successful career representing talent across television, film, and musical theatre. Richard cut his teeth in the agency world under the guidance of Shane Collins at Shane Collins Associate. He helped represent clients in a plethora of west end productions including: Les Miserable, Wicked, Hamilton, Book of Mormon, Matilda and Phantom of the Opera. He then joined the renowned team at Troika Talent (now YM&U Entertainment), where he helped manage some of the UK's most prominent and highly respected actors. Most recently, Richard ran Creative Screen Management, where he oversaw a dynamic and diverse roster of clients, helping to nurture and guide their careers across a wide spectrum of television, film and theatre.

Throughout his career he has worked with a variety of companies including Netflix, BBC, Amazon Prime, Disney+, Paramount, Apple TV+ and more.



ADMINISTRATION TEAM



HELEN HAINES
FINANCE/BUSINESS MANAGER
accounts@patrickstudiosaustralia.com.au



OLIVIA PARK
STUDIO MANAGER
olivia@patrickstudiosaustralia.com.au



MIA KAUFMAN
RECEPTION
info@patrickstudiosaustralia.com.au

NICOLA WILLIAMS
RECEPTION
info@patrickstudiosaustralia.com.au

PATRICK SCHOOL OF THE ARTS



Level 2, 140 High Street Prahran VIC 3181
P (03) 9521 1735 | info@patrickstudiosaustralia.com.au

www.psarts.com.au

